



DNV·GL

Nation Rise Wind Farm

Community Liaison Committee (CLC)

Meeting Minutes for CLC Meeting #2 – Held on 4 June 2019, 6:00 p.m. – 8:00 p.m. at Chrysler Community Centre (16 3rd St, Chrysler, ON, K0A 1R0).



# 1 ATTENDANCE, INVITATION AND AGENDA

## **Attendance**

The following Community Liaison Committee (CLC) members attended the CLC meeting held on 4 June 2019, 6:00 p.m. – 8:00 p.m. at Crysler Community Centre (16 3rd St, Crysler, ON, K0A 1R0) for the Nation Rise Wind Farm (the “Project”):

**Table 1-1: CLC Member Meeting Attendees**

<b>Organization</b>	<b>Name</b>	<b>Presence</b>
Member of the Mohawk of Akwesasne	Morgan McDonald	Absent
Local Resident and Treasurer of the Berwick Recreation Committee	Amy Sanders-Michaud	Present
Local Resident	Judy Tessier	Present
Public Works Superintendent at the Township of North Stormont	Blake Henderson	Present
EDP Renewables	Ken Little	Present
EDP Renewables	Nathan Roscoe	Present
DNV GL	Gabriel Constantin (Chair and Facilitator of the CLC)	Present

Moreover, approximately 15 members of the public attended the CLC meeting.

## **Invitation**

Prior to the meeting, an invitation notice was published on the Project website and in the following papers:


- Cornwall Standard Freeholder (May 22, 2019);
- Chesterville Record (May 22, 2019); and
- Indian Times (May 23, 2019).

The notice is included in the Appendix A.

## **Agenda**

An agenda was distributed to the CLC members prior to the meeting. The agenda of the meeting, as shown in Appendix A, was as follows:

1. CLC Introductions
2. Project Updates

- 
3. Construction Updates
  4. Traffic Management Plan
  5. Communication Plan and Complaint Response
  6. Monthly Construction Updates
  7. Summary of Municipal Agreements
  8. Public Inquiries
  9. Next Meeting Agenda and Discussion Items

The following sections summarize the discussions and questions related to the above agenda items that were addressed during the meeting.



## 2 CLC INTRODUCTIONS

Following the presentation of the meeting agenda, the meeting began with the re-introduction of the CLC members. Each member was asked to share the following information to the CLC:

- Name;
- Their location relative to the Project;
- Organization represented; and
- Interests/concerns associated with the Project.

Interest shared by the CLC members includes the following:

- Amy Sanders-Michaud: Local resident, Treasurer of the Berwick Recreation Committee and work as an accountant in the area, would like to make sure the groups and public she is involved with has the correct information about the Project;
- Judy Tessier: Landowner and local resident, has an interest in renewable energy and wants to help communicate and solve potential issues related to the Project; and
- Blake Henderson: Public Works Superintendent at North Stormont Township, often receive questions from the public about the Project and wants to communicate accurate information.

Morgan McDonald, a Member of the Mohawk of Akwesasne, was absent from this meeting.

The purpose of the Community Liaison Committee is to facilitate two-way communications between the Proponent and members of the public with respect to issues relating to the construction, installation, use, operation, maintenance and retirement of the Project. It provides a forum for the Proponent to give regular updates on, and to discuss issues or concerns relating to, the construction, installation, use, operation, maintenance and retirement of the Project with members of the public. And it ensures that any issues or concerns resulting from the construction, installation, use, operation, maintenance and retirement of the Project are discussed and communicated to the Proponent. Applications are still being accepted for review for any members of the public interested in participating.

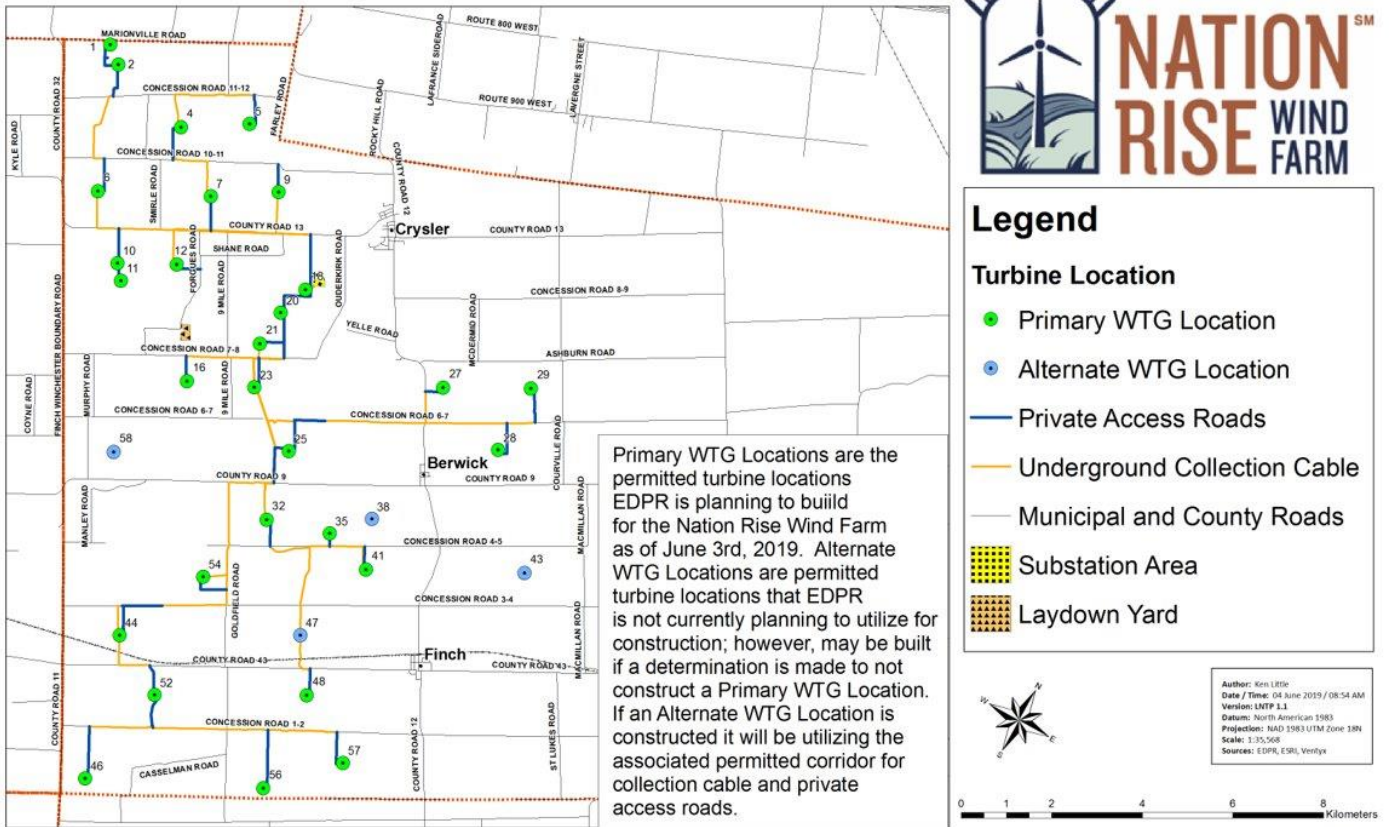
# 3 PROJECT UPDATES

## 3.1 Summary of Presentation

The turbine model for the Project has been selected, and E-138 EP3 turbines will be used for all 29 wind turbine generators (WTG) that will be installed. Enercon GmbH is the manufacturer of this turbine model; the turbine components are manufactured in Germany and are expected to be received at port of Johnstown. Each turbine’s hub will be 131 m high, with an expected nameplate capacity of 3.44 MW. The turbine sound power level will be lower than the permitted acoustically equivalent wind turbine.

The currently planned wind turbine layout was presented during the meeting, showing the planned 29 turbine locations, alternate locations, access roads, underground collection cable, substation area and laydown yard (Figure 1). The alternate turbine locations are permitted locations that the Project is not currently planning to utilize for construction; however, may be built if a determination is made to not construct a Primary WTG location. If an alternate WTG location is constructed, it will be utilizing the associated permitted corridor for collection cable and private access roads.

**NATION RISE WIND FARM** Project Layout - June 3rd, 2019



**Figure 1. Project Layout – June 3<sup>rd</sup>, 2019**

Baseline well water sampling as per Condition I of the REA was completed between October 1 and December 6, 2018. Further voluntary baseline pre-construction testing occurred from May 13th – 30th,

2019 at selected locations to better understand water quality metrics in spring water table conditions. This spring testing was not a requirement of the REA. Individual test data has been provided on this sampling campaign to participants as it is acquired from the lab.

Components of the well water sampling program included:

- Raw well water quality sampling for the list of parameters specified in Condition I3 of the REA. Field measurements for temperature, pH, conductivity, and turbidity were also obtained for future reference, if required.
- Voluntary questionnaire on well construction, past water quality/quantity issues, and water treatment.
- Well owner notification of preliminary microbiological results if Eastern Ontario Health Unit standards were exceeded.
- Provided final sample results to all well owners who requested a copy.
- Pre-construction Well Survey Report from the original fall 2018 sampling has been posted on the Project website. This includes maps of properties, summary of the methodology used, and the results of the water well sampling.

## 4 CONSTRUCTION UPDATES

### 4.1 Summary of Presentation

The EDPR Nation Rise Construction and Development Team members were present.

#### **Construction Team Members**

- Wayne Beck – Site Manager
- Jack Frosh – High Voltage Manager
- Ashley Mascarenhas – Environmental Manager
- Jason Walsh – Medium Voltage Manager
- Hasib Masroor – Civil Manager
- Richard Murphy – Safety Supervisor

#### **Development Team Members**

- Tom LoTurco – Director, Canada and Eastern Region US
- Ken Little – Associate Director
- Nathan Roscoe – Project Manager
- Hersh Jayaswal – Project Developer

EDPR has selected three companies to support construction activities: Borea Construction, Enercon Canada and Ridge-Pennecon. In June, construction activities will continue at the project substation including site grading, excavation, and installation of gantry structures. Construction of the laydown yard on Forgues Rd. is expected to begin on June 6 including site grading, road entrance installation, gravel installation and construction trailer delivery. Access road construction to individual turbine locations is expected to start on June 10, 2019. The updated anticipated Project schedule is provided in Table 4-1.

#### **Borea Construction**

Borea has constructed over 4,000 MW of wind energy projects in Canada with extensive experience in Ontario and Quebec. They will be responsible for private and public roadways, installation of collection cables, turbine foundations, and high voltage substation work. Borea is finalizing subcontractors and vendors for supporting their construction scope.

**Enercon Canada**

Enercon has been selected to supply E-138 EP3 wind turbine generators for the Nation Rise Wind Farm. They have been in operations for over 30 years and is one of the global market leaders in turbine manufacturing, construction and operations. Enercon will be leading the delivery and erection of wind turbine components.

**Ridge-Pennecon**

Ridge-Pennecon is a joint venture between Ridge National and Pennecon that formed to provided construction services at renewable energy projects. They were awarded a scope for early works including tree trimming/clearing, access road to the project substation, and certain culvert installations.

**Table 4-1: Anticipated Project Schedule**


Construction Activity	Anticipated Start Date
Site Clearing and Preparation	May 2019
Access Roads to Turbine Locations	May 2019
Substation and Interconnection	June 2019
Turbine Foundations	June 2019
Underground Collection System	June 2019
Turbine Deliveries	August 2019
Turbine Installation	August 2019
Turbine Commissioning	October 2019
Commercial Operation	December 2019
Land Restoration	Spring 2020

**4.2 Related Questions and Answers**

**Q: Can you please make sure that a link/button is located at the top of the Project website to easily redirect the public to the Construction Update webpage?**

**A:** The Project confirms that a link/button is located at the top of the Project website for construction update.

**Q: Will subcontractors apply for municipal permits?**



**A:** All Project related permits will be obtained by EDPR (entrance permits, oversize, etc.). If specific permits related to Occupation, Health and Safety needs to be obtained, each subcontractor will apply as necessary.

**Q: *How will the crane be supplied and installed at the site?***

**A:** Large crane will be needed for the installation of the wind turbines, and this type of crane will be built at each turbine site. Moreover, there will be several smaller and mobile cranes used for the construction of the Project.





## 5 TRAFFIC MANAGEMENT PLAN

### 5.1 Summary of Presentation

EDPR is to utilize a Transportation Plan as stipulated in the Road User's Agreement with both the Township of North Stormont and the United Counties of Stormont, Dundas and Glengarry (SD&G) for all oversized loads. The Traffic Management Plan has been distributed to the Township and County in December 2018 and revised in February 2019 to address comments from the Municipality and County. These documents will continue to be living documents through the construction of the Project as any further comments or requests are received from the Township and County for traffic management.

The Traffic Management Plan includes delivery routing of components for individual turbine locations, aggregate supply routes and wind farm project entrances. It also includes traffic management during entrance construction, roadway upgrades, construction vehicle traffic, and component deliveries. The Traffic Management Plan also includes statutory and best practices for flagging, signage and safe operations near and along public rights-of-way when work is to be completed.

### 5.2 Related Questions and Answers

***Q: Will specific information be shared to the public about where construction will occur for a certain week? That would allow local residents to plan according to potential construction traffic.***

***A:*** The Nation Rise construction update webpage (<https://updates.nationrisewindfarm.com>) provides 2-day, 1-week and 2-week lookahead with specific information about project component's installation and construction activities. A map of construction activities is also provided.

## 6 COMMUNICATION PLAN AND COMPLAINT RESPONSE

### 6.1 Summary of Presentation

#### *Construction Updates*

The Nation Rise Wind Farm construction team is providing regular updates of current and forecasted activities at <https://updates.nationrisewindfarm.com>. This webpage provides an overview of construction activities for the 2-day look ahead, current week and next week. A map is also provided to show the overall Project layout for reference on related construction activities.

The webpage also contains key contact information for the Project during construction. Questions about construction activities can be directed via email or phone at the contact information below:

- E-mail: [nationrise@edpr.com](mailto:nationrise@edpr.com)
- Phone: (613) 240-0348

#### *Enquiries Register*


EDPR is creating an ongoing Enquiries Register to address questions, concerns and comments about the Nation Rise Wind Farm through a document that will be posted on the Project website and distributed to the Township of North Stormont. This development of the Enquiries Register was a commitment from the May 14<sup>th</sup> presentation to the Council of the Township of North Stormont. The Enquiries Register will build upon the Consultation Report created during the Nation Rise Wind Farm REA application to address enquiries from community members, local stakeholders, Township, County, etc. Questions to the Enquiries Register can be submitted via e-mail or phone at the contact information below:

- E-mail: [nationrise@edpr.com](mailto:nationrise@edpr.com)
- Phone: (416) 502-9463, ext. 3

#### *Complaint Resolution*

As per Condition W of the REA, record of any complaint will be maintained of an alleged Adverse Effect caused by the construction, installation, use, operation, maintenance or retirement of the Facility. The record will include the date and time the complaint was made, and the name, address and contact information of the person who submitted the complaint. A description of each incident will include information such as the date, time and duration of each incident; the wind speed and wind direction at the time of each incident; the ID of the Equipment involved in each incident; the location of the person who submitted the complaint; and a description of the measures taken to address the cause of each incident.

For notification, the Proponent will notify the District Manager in writing of each complaint within two business days of the receipt of the complaint. The Proponent will also provide the MECP District Manager with the written records of the complaint within eight business days of the receipt.



As per Condition I of the REA, any complaints related to water quality will require sampling within 24 hours of receipt of complaint and the MECP will be informed of any water well related complaints within one business day. The Project will work with the complainant and MECP to resolve any well water complaints quickly while following the guidance of the REA and Water Well Complaint Response Procedure as approved by the MECP and found on the project website (<https://nationrisewindfarm.com/>).



## 7 MONTHLY CONSTRUCTION UPDATES

### 7.1 Summary of Presentation

EDPR committed to providing a public forum for monthly construction updates during a presentation to the Township of North Stormont on May 14th, 2019. EDPR will be working to consult with the CLC, Municipality, MECP and community stakeholders on providing a forum for monthly construction updates open to the public. It is expected this forum will provide an opportunity for the Project team to share progress that has been achieved, upcoming construction activities, and to provide access to the Project team to ask questions and engage on the Project.

The CLC members and EDPR discussed the possibility of having monthly construction update open houses, to provide a forum for construction and schedule updates, meet the construction team, and to answer questions related to the construction of the Project. These construction update open houses would be open to the public and hosted by the construction team on a monthly basis during the active construction of the Project. It was proposed to host these meetings during the first week of each month, either on Thursday (preferred choice) or Wednesday. Notice of the monthly construction update open houses could be included on the Project website, the local newspapers, online through Nation Valley News website, and at the Township and County offices.

### 7.2 Related Questions and Answers

***Q: Could the Township of North Stormont host the monthly construction update open houses?***

***A:*** Finding a location outside of the Township office is preferable. Several questions about the Project are being asked during council meetings and the council members would like the Project to have a separate event to address any questions and concerns about the Nation Rise Wind Farm.

## 8 SUMMARY OF MUNICIPAL AGREEMENTS

### 8.1 Summary of Presentation

The Nation Rise Wind Farm has reached, or is in the process of reaching, agreements with the local township and county regarding road use, community funds, and municipal drainage.

#### **Township of North Stormont and United Counties of SD&G – Road Use and Right of Way Agreement**

The Project entered into nearly identical agreements with both the Township of North Stormont and SD&G Counties for the use of roadways during the construction and operational life of the Project. This agreement contemplates the usage of public roads for oversized equipment delivery and the installation of collection cables. The agreement also stipulates how road damages will be surveyed and compensation for repairs to be performed by the County and Township, or by the Project at the election of the municipalities.

#### **Township of North Stormont – Community Fund Agreement**

This agreement creates an annual payment of \$300,000 per year for the Project to pay to North Stormont above and beyond current property taxes. This payment is to begin in the year of operations 60 days after meeting Commercial Operations Date. The fund is currently set to be 90% for Asset Management Plan and 10% Community Grants and Contribution Plans at the discretion of the Township of North Stormont.

#### **Township of North Stormont – Municipal Drainage Reimbursement Agreement (Pending)**

Nation Rise is working with the Township of North Stormont to execute an agreement that will allow for the reimbursement for works related to the review of Municipal Drainage crossings allowing North Stormont to engage a third-party engineer, currently expected to be McIntosh Perry. Further the agreement contemplates insurance requirements, remedies and responsibilities for work occurring at Municipal drains

### 8.2 Related Questions and Answers

#### ***Q: Could the community benefits be reduced if less turbines are installed?***

**A:** No, the Community Fund Agreement is not dependent on the number of turbines installed or total nameplate capacity as the funding is set as \$300,000 annually to the Township escalating under the terms of the Community Fund Agreement.



## 9 PUBLIC INQUIRIES

### 9.1 Summary of Presentation

Nation Rise Wind Farm has been accepting Public Inquiries, but no Public Inquiries were received prior to the meeting. The Public Inquiry Form is available on the Project website and at the township office, and should be submitted at least four days prior to a CLC meeting in order to be discussed at that meeting. The Public Inquiry Form should be submitted to the Project email address ([nationrise@edpr.com](mailto:nationrise@edpr.com)) or mail it at the following address:

Nation Rise Wind Farm Limited Partnership  
219 Dufferin St. Unit 217C,  
Toronto, Ontario M6K 3J1



## 10 NEXT MEETING AGENDA AND DISCUSSION ITEMS

### 10.1 Summary of Presentation

In discussion with the CLC members, it was decided that the following topics should be considered for the next CLC Meeting:

- Feedback and effectiveness of monthly construction updates open house;
- Feedback on Project construction updates website (<https://updates.nationrisewindfarm.com>);
- Update on construction activities to date and construction activities that are coming up;
- Overview of the Traffic Management Plan;
- Overview of the Communication Plan and Complaint Response Protocol; and
- Summary of the agreement between the Project and the Township of North Stormont.

The exact list of topics will be confirmed through an agenda shared by the CLC members prior to the third CLC meeting. The third CLC meeting is anticipated to occur closer to turbine delivery.



## **APPENDIX A – INVITE NOTICE AND AGENDA**

---



# **NATION RISE WIND FARM COMMUNITY LIAISON COMMITTEE**

## **By Nation Rise Wind Farm Limited Partnership**

**Tuesday, June 4, 2019**

**6:00 p.m. – 8:00 p.m.  
Crysler Community Centre**

**16 3rd St, Crysler, ON, K0A 1R0**

## **Open to the General Public for Viewing**

The Nation Rise Wind Farm (the "Project") is a proposed wind farm of approximately 100 MW that is located on private and public lands in the United Counties of Stormont, Dundas and Glengarry in the Township of North Stormont, Ontario. The Project received a Renewable Energy Approval (REA) from the Ministry of Environment, Conservation and Parks (formerly the Ontario Ministry of Environment and Climate Change) on May 4, 2018. As part of the REA, the Project has established a Community Liaison Committee (CLC) primarily for residents within one kilometer of the Project, but also open to anyone with an interest in the construction, installation, use, operation, maintenance and retirement of the Project.

The CLC is intended to be a forum to discuss Project updates, milestones, concerns, issue resolution, and mitigation. CLC members will be asked to act as a liaison facilitating two-way communications between the Project and members of the public to provide updates and seek feedback regarding the Project.

DNV GL will coordinate each CLC meeting. All meeting materials (minutes, presentations, etc.) will be made available for public review on the Project website at <http://nationrisewindfarm.com/>. The agenda for the meeting will be posted on the Project website in advance of the meeting.

This second CLC meeting is open to the general public for observation. Brief Public Inquiries may be presented by members of the public. Please note that should a significant number of Public Inquiries be received in advance of the meeting, the CLC members and Nation Rise Wind Farm LP will review the inquiries and make a final representative selection for discussion at the CLC meeting. To be considered as a Public Inquiry, a written request must be sent using the Public Inquiry Form located on the Project website. Hard copies of the Public Inquiry Form are also available at the North Stormont Township Offices located at 15 Union Street in Berwick, Ontario. Public Inquiry Forms must be submitted no later than Thursday, May 30, 2019, to the Project email address ([nationrise@edpr.com](mailto:nationrise@edpr.com)). Alternatively, they can be mailed to the following address:

**Nation Rise Wind Farm Limited Partnership**  
219 Dufferin St. Unit 217C  
Toronto, Ontario M6K 3J1

For general Project questions or comments, please e-mail [nationrise@edpr.com](mailto:nationrise@edpr.com) or phone (416) 502-9463. To learn more about the Project, visit the Project website at <http://nationrisewindfarm.com/>.



## **NATION RISE WIND FARM**

**Second Community Liaison Committee (CLC) Meeting – 4 June  
2019, 6:00 p.m. – 8:00 p.m. at Chrysler Community Centre  
(16 3rd St, Chrysler, ON, K0A 1R0)**

### **Meeting Agenda**

#### **Discussion topics**

- 1) Quick Introduction the Community Liaison Committee (CLC) Team Members
- 2) Update on Final Turbine Locations for the Project
- 3) Update on Construction Activities to Date and Upcoming Construction Activities
- 4) Overview of Traffic Management Plan
- 5) Overview of Communication Plan and Complaint Response Protocol
- 6) Discuss Format for Monthly Project Update Meetings Requested by the Township of North Stormont
- 7) Summary of Agreement Between the Project and the Township of North Stormont
- 8) Public Inquiries – Inquiries and Discussion from the Public
- 9) Proposed Topic/Agenda for the Next Meeting



## **APPENDIX B – PRESENTATION**

---

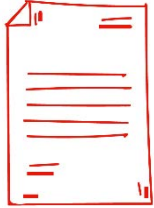


# **Nation Rise Wind Farm Community Liaison Committee Meeting #2**

**Crysler Community Centre  
16 3<sup>rd</sup> St Chrysler, ON K0A 1R0**

June 4th, 2019

# AGENDA



- A CLC Introductions
- B Project Updates
- C Construction Updates
- D Traffic Management Plan
- E Communication Plan and Complaint Response
- F Monthly Construction Updates
- G Summary of Municipal Agreements
- H Public Inquiries
- I Next Meeting Agenda and Discussion Items



---

# INTRODUCTION OF CLC MEMBERS

---

## Community Liaison and Project Team Members

### Community Liaison Members

- Morgan McDonald
- Amy Sanders-Michaud
- Judy Tessier
- Blake Henderson

### CLC Facilitator and Chair

- Gabriel Constantin - DNV GL

### Project Team Members

- Ken Little – Associate Director, EDP Renewables Canada
- Nathan Roscoe – Project Manager, EDP Renewables Canada

# COMMUNITY LIAISON COMMITTEE

## **Purpose of Community Liaison Committee (CLC)**

- Act as a liaison facilitating two-way communications between the Proponent and members of the public with respect to issues relating to the construction, installation, use, operation, maintenance and retirement of the Project;
- Provide a forum for the Proponent to provide regular updates on, and to discuss issues or concerns relating to, the construction, installation, use, operation, maintenance and retirement of the Project with members of the public; and
- Ensure that any issues or concerns resulting from the construction, installation, use, operation, maintenance and retirement of the Project are discussed and communicated to the Proponent.

## **CLC Membership**

- Currently comprised of a local resident, local landowner, North Stormont staff member, and a member of the Mohawk Council of Akwesasne
- Applications are still being accepted for review for any members of the public interested in participating





---

## PROJECT UPDATES

---

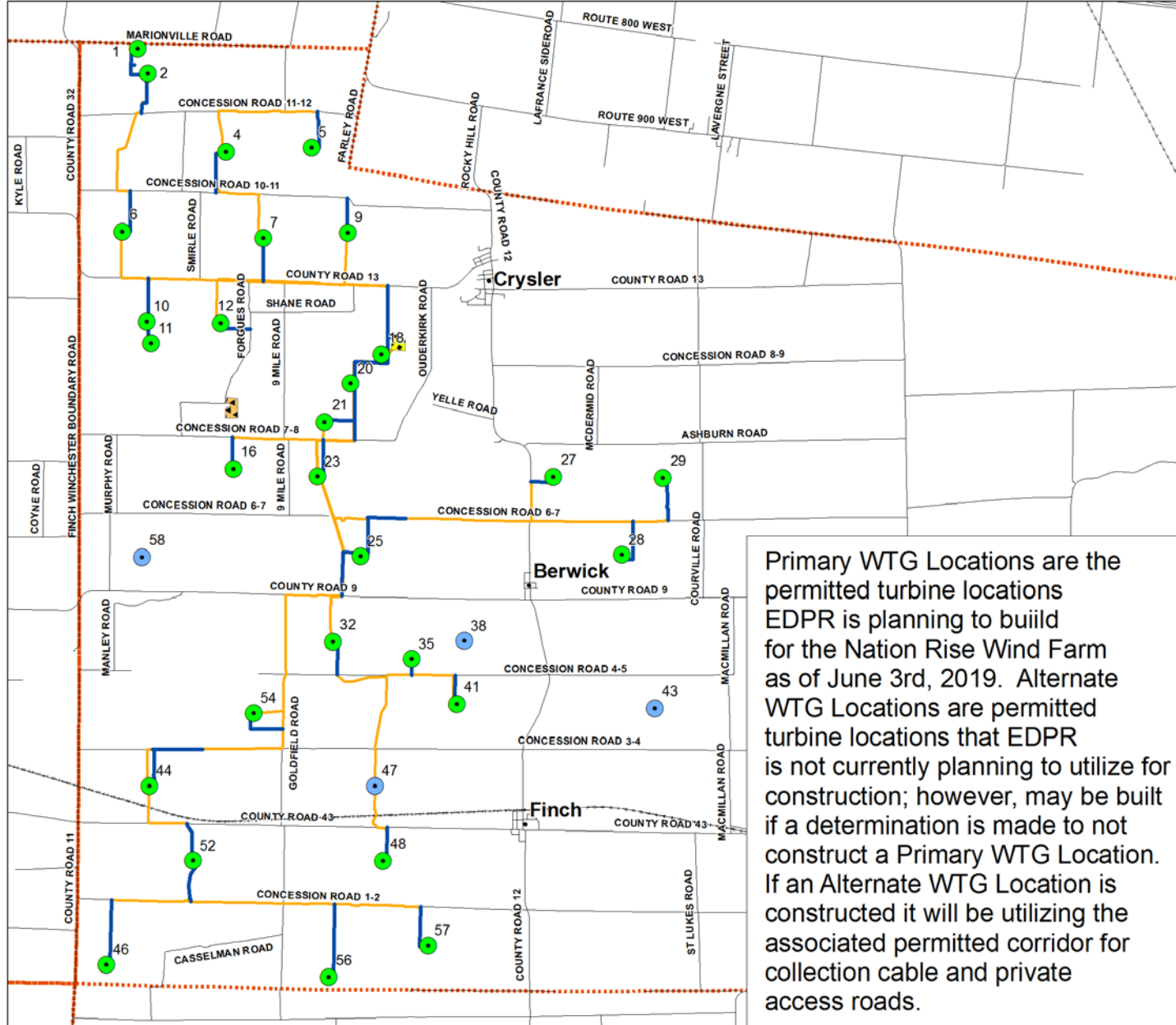
# Selected Wind Turbines: Enercon E-138 EP3

- Turbine Manufacturer: Enercon GmbH
- Number of Turbines: up to 33 permitted, 29 WTG to be installed
- Turbine Model: E-138 EP3
- Nameplate Capacity (expected): 3.44 MW
- Hub height: up to 131m
- Turbine components manufactured in Germany, to be received at port of Johnstown
- Turbine sound power level will be lower than permitted acoustically equivalent wind turbine



Source: Enercon GmbH  
*edp* renewables

# NATION RISE WIND FARM Project Layout - June 3rd, 2019



Primary WTG Locations are the permitted turbine locations EDPR is planning to build for the Nation Rise Wind Farm as of June 3rd, 2019. Alternate WTG Locations are permitted turbine locations that EDPR is not currently planning to utilize for construction; however, may be built if a determination is made to not construct a Primary WTG Location. If an Alternate WTG Location is constructed it will be utilizing the associated permitted corridor for collection cable and private access roads.

### Legend

- Primary WTG Location
- Alternate WTG Location
- Private Access Roads
- Underground Collection Cable
- Municipal and County Roads
- Substation Area
- Laydown Yard

Author: Ken Little  
 Date / Time: 04 June 2019 / 08:54 AM  
 Version: LNTP 1.1  
 Datum: North American 1983  
 Projection: NAD 1983 UTM Zone 18N  
 Scale: 1:35,568  
 Sources: EDPR, ESRI, Ventyx

## VOLUNTARY SPRING BASELINE WELL WATER SAMPLING

- Baseline well water sampling as per Condition I of the REA was completed between October 1 and December 6, 2018.
- Further voluntary baseline pre-construction testing occurred from May 13<sup>th</sup> – 30<sup>th</sup>, 2019 at selected locations to better understand water quality metrics in spring water table conditions. This spring testing was not a requirement of the REA. Individual test data has been provided on this sampling campaign to participants as it is acquired from the lab.
- Components of the well water sampling program included:
  - Raw well water quality sampling for the list of parameters specified in Condition I3 of the REA. Field measurements for temperature, pH, conductivity, and turbidity were also obtained for future reference, if required.
  - Voluntary questionnaire on well construction, past water quality/quantity issues, and water treatment.
  - Well owner notification of preliminary microbiological results if Eastern Ontario Health Unit standards were exceeded.
  - Provided final sample results to all well owners who requested a copy.
  - Pre-construction Well Survey Report, now posted on the Project website. This includes maps of all properties, summary of the methodology used, and the results of the water well sampling.



---

# CONSTRUCTION UPDATES

---

# Nation Rise Project Team Members (EDPR)

## Construction Team Members

- Wayne Beck – Site Manager
- Jack Frosh – High Voltage Manager
- Ashley Mascarenhas – Environmental Manager
- Jason Walsh – Medium Voltage Manager
- Hasib Masroor – Civil Manager
- Richard Murphy – Safety Supervisor

## Development Team Members

- Tom LoTurco – Director, Canada and Eastern Region US
- Ken Little – Associate Director
- Nathan Roscoe – Project Manager
- Hersh Jayaswal – Project Developer

# Nation Rise Construction General Contractors Selected

## Borea Construction

- Borea has constructed over 4,000 MW of wind energy projects in Canada with extensive experience in Ontario and Quebec.
- Borea will be responsible for private and public roadways, installation of collection cables, turbine foundations, and high voltage substation work.
- Borea is finalizing subcontractors and vendors for supporting their construction scope.

## Enercon Canada

- Enercon has been selected to supply E-138 EP3 wind turbine generators for the Nation Rise Wind Farm. Enercon has been in operations for over 30 years and is one of the global market leaders in turbine manufacturing, construction and operations.
- Enercon will be leading the delivery and erection of wind turbine components.

# Nation Rise Construction General Contractors Selected

## Ridge-Pennecon

- Ridge-Pennecon is a joint venture between Ridge National and Pennecon formed to provide construction services at renewable energy projects.
- Ridge-Pennecon was awarded a scope for early works including tree trimming/clearing, access road to the project substation, and certain culvert installations.



## CONSTRUCTION OVERVIEW AND TIMELINE

Construction Activity	Anticipated Start Date
Site Clearing and Preparation	May 2019
Access Roads to Turbine Locations	May 2019
Substation and Interconnection	June 2019
Turbine Foundations	June 2019
Underground Collection System	June 2019
Turbine Deliveries	August 2019
Turbine Installation	August 2019
Turbine Commissioning	October 2019
Commercial Operation	December 2019
Land Restoration	Spring 2020

## CONSTRUCTION ACTIVITY – NEXT TWO WEEKS JUNE 3-14

- Construction activities will continue at the project substation including site grading, excavation, and installation of gantry structures
- Construction of the laydown yard on Forgues Rd. is expected to begin on June 6<sup>th</sup> including site grading, road entrance installation, gravel installation and construction trailer delivery
- Access road construction to individual turbine locations is expected to start on June 10<sup>th</sup>





---

# TRAFFIC MANAGEMENT PLAN

---

## Traffic Management Plan

- EDPR to utilize Transportation Plan as stipulated in the Road User's Agreement with both the Township of North Stormont and the United Counties of Stormont, Dundas and Glengarry for all oversized loads.
- Traffic Management Plan has been distributed to the Township and Counties in December 2018 and revised in February 2019 to address comments from the Municipalities. These documents will continue to be living documents through the construction of the project as any further comments or requests are received from the Township and Counties for traffic management.
- The Traffic Management Plan includes:
  - Delivery routing of components for individual turbine locations, aggregate supply routes and wind farm project entrances
  - Traffic management during entrance construction, roadway upgrades, construction vehicle traffic, and component deliveries
    - This includes statutory and best practices for flagging, signage and safe operations near and along public ROW's when work is to be completed.



---

# COMMUNICATION PLAN AND COMPLAINT RESPONSE

---

## CONSTRUCTION UPDATES DURING CONSTRUCTION

- The Nation Rise Wind Farm construction team will be providing regular updates of current and forecasted activities on the following website: [updates.nationrisewindfarm.com](https://updates.nationrisewindfarm.com)
- This will provide an overview of construction activities for the 2-day look ahead, current week and next week. A map will also be provided that will show the overall project layout for reference on related construction activities.
- The site will also contain key contact information for the project during construction.
- Questions about construction activity can be directed to:
  - E-mail: [nationrise@edpr.com](mailto:nationrise@edpr.com)
  - Phone: (613) 240-0348

# CONSTRUCTION UPDATE EXAMPLE

## THIS WEEK: JUNE 3-9, 2019

The following items are scheduled for this week.

- Site grading and excavation at project substation off of County Road 13.
- Site grading, preparation and gravel delivery at laydown yard on Forgues Rd.
- Ongoing tree trimming and clearing on private properties and public ROW.
- Archaeological studies near WTG #52.
- Further surveys and staking on private properties and public ROW.

## 2-DAY LOOK AHEAD

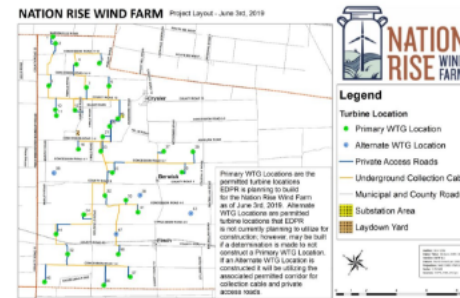
- Site grading and excavation at project substation off of County Road 13.
- Site grading at laydown yard on Forgues Rd.
- Ongoing tree trimming and clearing on private properties and public ROW.
- Archaeological studies near WTG #52.
- Further surveys and staking on private properties and public ROW.

## NEXT WEEK: JUNE 10-16, 2019

- Foundation preparation at project substation off of County Road 13.
- Gravel installation at laydown yard on Forgues Rd and potential delivery of construction equipment and trailers.
- Continued tree trimming and clearing on private properties and public ROW.
- Archaeological studies near WTG #52.
- Further surveys and staking on private properties and public ROW.
- Construction of access roads to individual turbine locations.

## ACTIVITY MAP

(CLICK IMAGES TO ENLARGE)



## ENQUIRIES REGISTER

- EDPR is creating an ongoing enquiries register to address questions, concerns and comments about the Nation Rise Wind Farm through a document that will be posted on the project website and distributed to the Township of North Stormont.
- This development of the Enquiries Register was a commitment from the May 14<sup>th</sup> presentation to the Council of the Township of North Stormont.
- The Enquiries Register will build upon the Consultation Reports created during the Nation Rise Wind Farm REA application to address enquiries from community members, local stakeholders, Township, Counties, etc.
- Please provide questions to the Enquiries Register through e-mail at: [nationrise@edpr.com](mailto:nationrise@edpr.com) or by calling (416) 502-9463, ext. 3



## COMPLAINT RESOLUTION

- As per Condition W of the REA, record of any complaint will be maintained of an alleged Adverse Effect caused by the construction, installation, use, operation, ;maintenance or retirement of the Facility.
- The record will include the date and time the complaint was made, and the name, address and contact information of the person who submitted the complaint.
- A description of each incident will include information such as the date, time and duration of each incident; the wind speed and wind direction at the time of each incident; the ID of the Equipment involved in each incident; the location of the person who submitted the complaint; and a description of the measures taken to address the cause of each incident to which the complaint.
- For notification, the Proponent will notify the District Manager in writing of each complaint within two (2) business days of the receipt of the complaint. The Proponent will also provide the MECP District Manager with the written records of the complaint within eight (8) business days of the receipt.
- As per Condition I of the REA, any complaints related to water quality will require sampling within 24 hours of receipt of complaint and will inform the MECP of any water well related complaints within one business day.
- Nation Rise will work with the complainant and MECP to resolve any well water complaints quickly while following the guidance of the REA and Water Well Complaint Response Procedure as approved by the MECP and found on the project website.



---

# CONSTRUCTION MONTHLY UPDATE MEETINGS

---

## CONSTRUCTION UPDATES – MONTHLY PUBLIC FORUM

- EDPR committed to providing a public forum for monthly construction updates during a presentation to the Township of North Stormont on May 14<sup>th</sup>, 2019
- EDPR will be working to consult with the CLC, Municipality, MECP and community stakeholders on providing a forum for monthly construction updates open to the public.
- It is expected this forum will provide an opportunity for the Nation Rise Wind Farm team to share progress that has been achieved with the project, upcoming construction activities, and to provide access to the project team to ask questions and engage on the project.
- Please reach out to the CLC or EDPR for comments or suggestions on this proposed monthly update meeting.



---

# MUNICIPAL AGREEMENT SUMMARY

---

## MUNICIPAL AGREEMENT SUMMARY

- **Township of North Stormont and United Counties of SD&G – Road Use and Right of Way Agreement**
  - Nation Rise entered into nearly identical agreements with both North Stormont and SD&G for the use of roadways during the construction and operational life of the project.
  - This agreement contemplates the usage of public roads for oversized equipment delivery and the installation of collection cables.
  - The agreement also stipulates how road damages will be surveyed and compensation for repairs to be performed by the County and Township, or by Nation Rise at the election of the Municipalities.
- **Township of North Stormont – Community Fund Agreement**
  - This agreement creates an annual payment of \$300,000 per year for Nation Rise to pay to North Stormont above and beyond current property taxes. This payment is to begin in the year of operations 60 days after meeting Commercial Operations Date.
  - The fund is currently set to be 90% for Asset Management Plan and 10% Community Grants and Contribution Plans at the discretion of North Stormont.
- **Township of North Stormont – Municipal Drainage Reimbursement Agreement (Pending)**
  - Nation Rise is working with the Township of North Stormont to execute an agreement that will allow for the reimbursement for works related to the review of Municipal Drainage crossings allowing North Stormont to engage a third-party engineer, currently expected to be McIntosh Perry
  - Further the agreement contemplates insurance requirements, remedies and responsibilities for work occurring at Municipal drains



---

## PUBLIC INQUIRIES AND DISCUSSION

---

# PUBLIC INQUIRIES

## Public Inquiries Received Prior to the Meeting

- No Public Inquiries were received prior to the meeting.

## Reminders

- The Public Inquiry Form is available on the Project website and at the township office.
- Please submit the Public Inquiry Form at least four days prior to CLC meeting.
- Please submit your Public Inquiry Form to the Project email address ([nationrise@edpr.com](mailto:nationrise@edpr.com)) or mail it at the following address:

Nation Rise Wind Farm Limited Partnership  
219 Dufferin St. Unit 217C  
Toronto, Ontario M6K 3J1



---

## FUTURE MEETING AGENDA

---





---

Thank you

---



## **ABOUT DNV GL**

Driven by our purpose of safeguarding life, property and the environment, DNV GL enables organizations to advance the safety and sustainability of their business. We provide classification, technical assurance, software and independent expert advisory services to the maritime, oil & gas and energy industries. We also provide certification services to customers across a wide range of industries. Combining leading technical and operational expertise, risk methodology and in-depth industry knowledge, we empower our customers' decisions and actions with trust and confidence. We continuously invest in research and collaborative innovation to provide customers and society with operational and technological foresight. Operating in more than 100 countries, our professionals are dedicated to helping customers make the world safer, smarter and greener.