

Title
Marble River Wind Farm

*Towns of Clinton and Ellenburg,
 Clinton County, New York*

**Figure 5: Viewshed Analysis for the
 Modified Project - Topographic Blade
 Tip (492 ft.) Visibility**

Legend

- Wind Turbine
- 5 Mile Boundary
- 10 Mile Boundary
- Adirondack Park
- Potentially Visible
- Town Boundary

Notes

Map Created: August 2010.

Base Map:
 ESRI StreetMap North America 2008.

© 2010 Environmental Design & Research.
 Landscape Architecture, Planning, Environmental
 Services, Engineering and Surveying, P.C.

Author

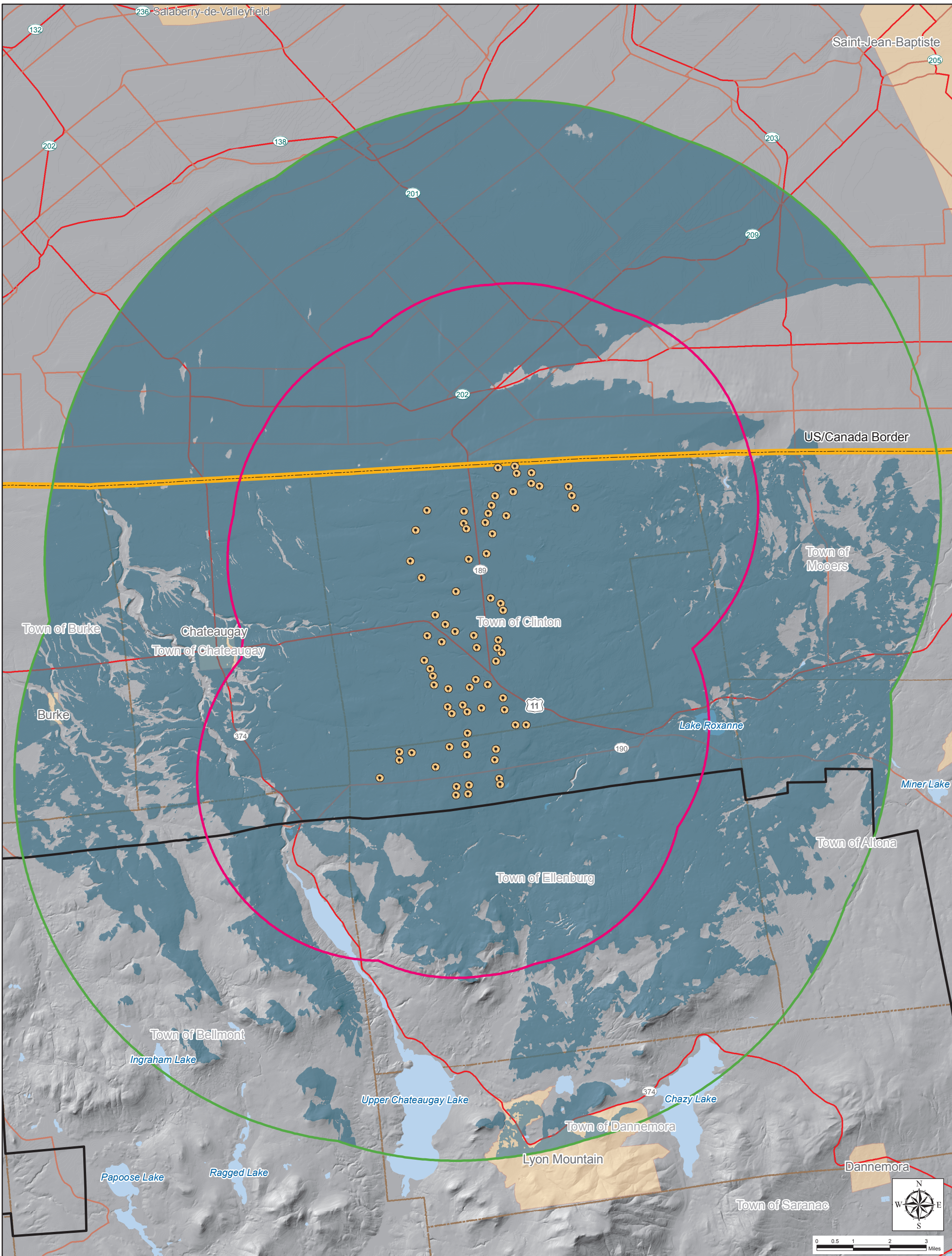


MARBLE RIVER
 WIND FARM



An EDP Renewables Company





Title
Marble River Wind Farm

*Towns of Clinton and Ellenburg,
 Clinton County, New York*

**Figure 5: Viewshed Analysis for the
 Modified Project - Topographic
 Nacelle (308 ft.) Visibility**

Legend

- Wind Turbine
- 5 Mile Boundary
- 10 Mile Boundary
- Adirondack Park
- Potentially Visible
- Town Boundary

Notes

Map Created: August 2010.

Base Map:
 ESRI StreetMap North America 2008.

© 2010 Environmental Design & Research.
 Landscape Architecture, Planning, Environmental
 Services, Engineering and Surveying, P.C.

Author

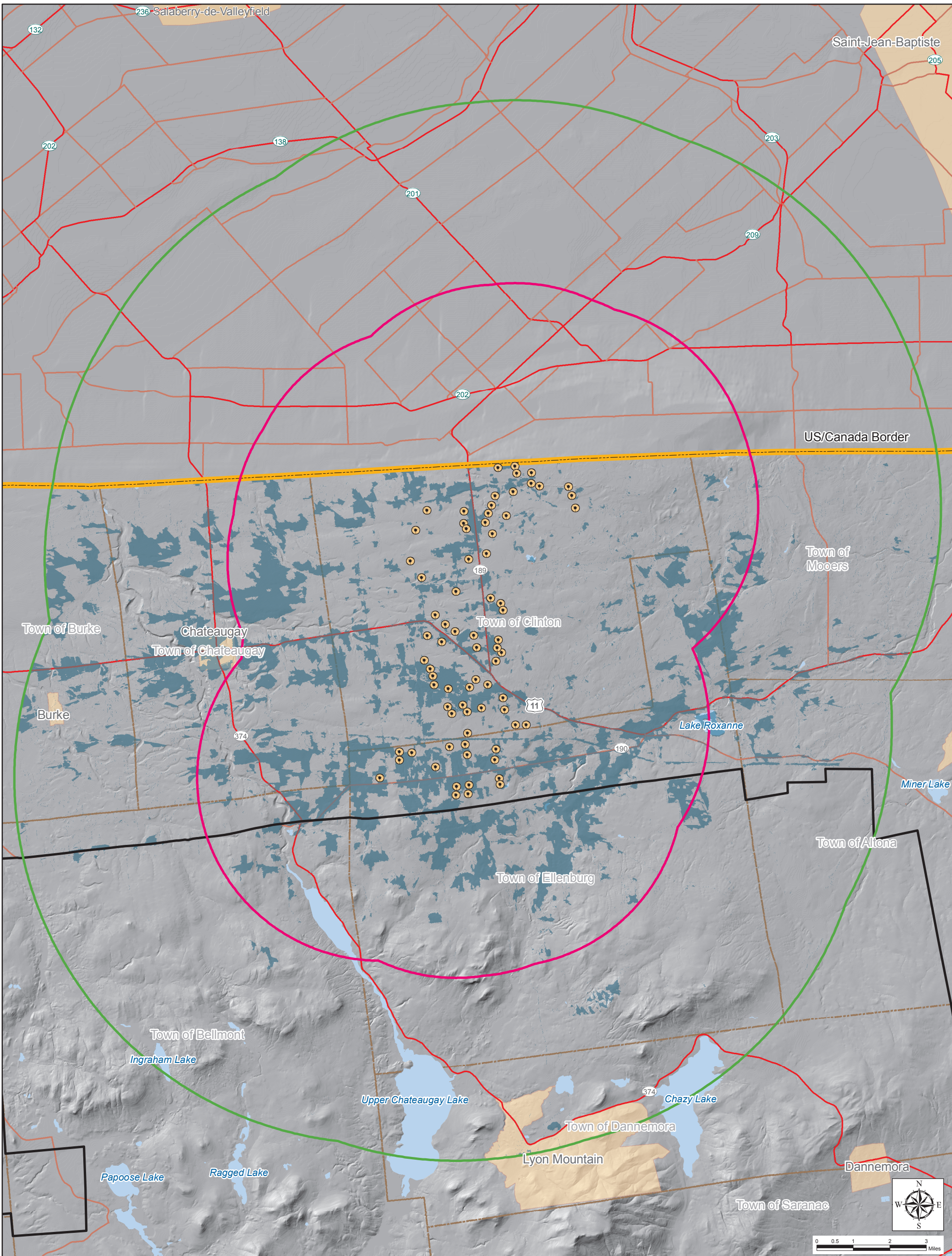


MARBLE RIVER
 WIND FARM



An EDP Renewables Company





Title
Marble River Wind Farm

*Towns of Clinton and Ellenburg,
 Clinton County, New York*

**Figure 5: Viewshed Analysis for the
 Modified Project - Blade Tip (492 ft.)
 Topography and Vegetation**

Legend

- Wind Turbine
- 5 Mile Boundary
- 10 Mile Boundary
- Adirondack Park
- Potentially Visible
- Town Boundary

Notes

Map Created: August 2010.

Base Map:
 ESRI StreetMap North America 2008.

© 2010 Environmental Design & Research.
 Landscape Architecture, Planning, Environmental
 Services, Engineering and Surveying, P.C.

Author

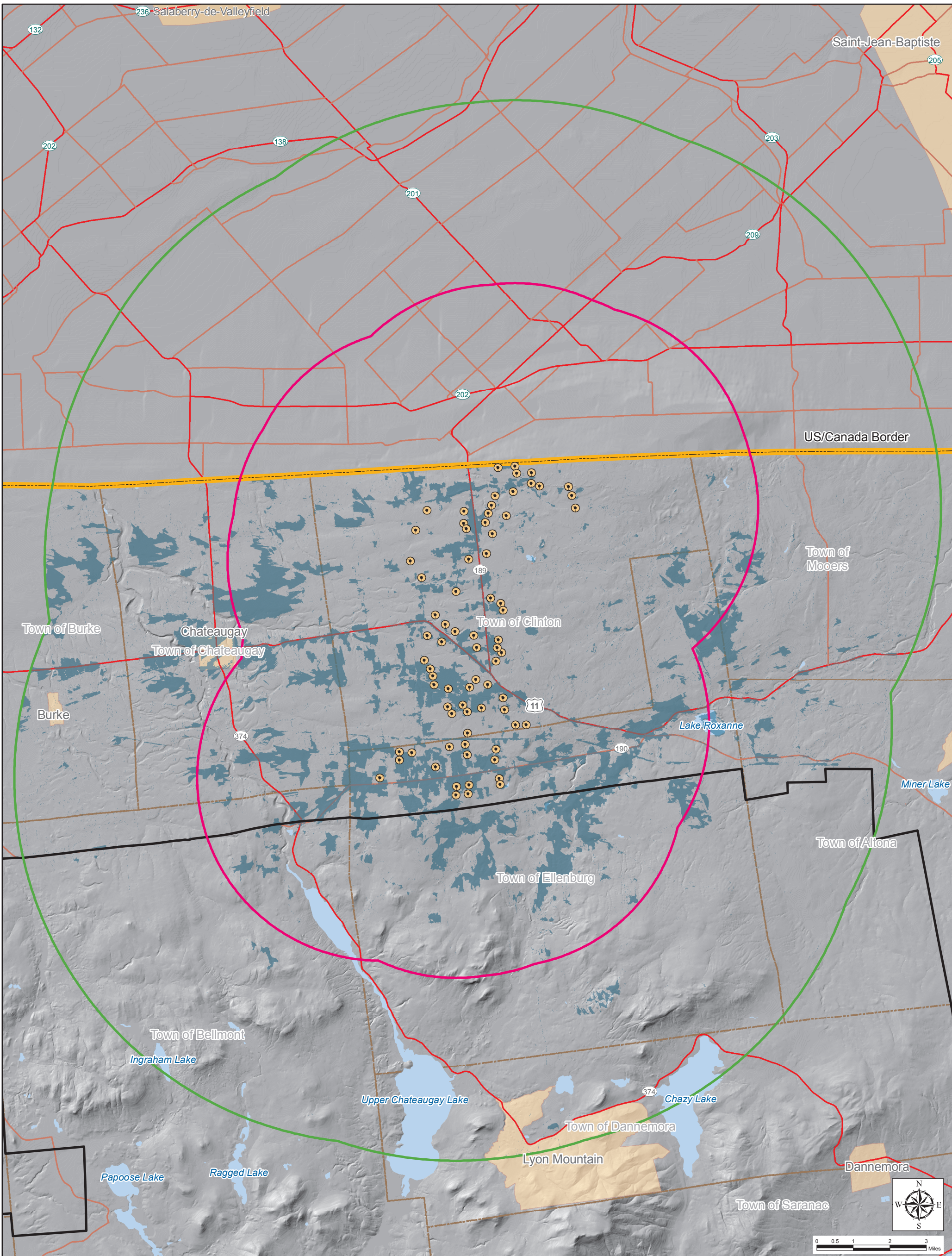


MARBLE RIVER
 WIND FARM



Horizon Wind Energy
 An EDP Renewables Company





Title
Marble River Wind Farm

*Towns of Clinton and Ellenburg,
 Clinton County, New York*

**Figure 5: Viewshed Analysis for the
 Modified Project - Nacelle (308 ft.)
 Topography and Vegetation**

Legend

- Wind Turbine
- 5 Mile Boundary
- 10 Mile Boundary
- Adirondack Park
- Potentially Visible
- Town Boundary

Notes

Map Created: August 2010.

Base Map:
 ESRI StreetMap North America 2008.

© 2010 Environmental Design & Research.
 Landscape Architecture, Planning, Environmental
 Services, Engineering and Surveying, P.C.

Author



MARBLE RIVER
 WIND FARM



Horizon Wind Energy
 An EDP Renewables Company

