

Point of Interconnect and Collector Stations at Gunboat Rock

Site Description

The substations are located at the end of access road # 7 in an area of brush cover. The Point of Interconnection (POI) Station, approximately 267 feet x 690 feet in size, is proposed to be located within the New York Power Authority (NYPA) 230 kV transmission line easement area. The POI station will connect to the New York Bulk Power System and will be built in compliance with Northeast Power Coordinating Council (NPCC) regulations.

To the north of the POI Station will be two 34.5 kV collector stations, each approximately 136 feet x 173 feet. Each collector station includes one 34.5kV/230kV step-up transformer, with the larger transformer (90/120/150MVA) connecting to the Willis Plattsburgh #2 Line (WP-2) and the smaller transformer (60/80/100MVA) connecting to WP#1. Both collector stations will be laid out to accommodate seven collector circuits, including one spare bay.

There will be a control house and a common parking area between the two collector stations, which will be accessed from Star Road to the south via a new access road. The POI Station will have four 230 kV breakers, although it will be laid out to accommodate six breakers if required. Final approval by NYPA and the New York Independent System Operator (NYISO) of the Facility Study, as mandated by the Federal Energy Regulatory Energy Commission (FERC) tariff, will be required prior to interconnection to the grid. The POI Station will have its own separate control building, set back inside the fence by at least 10ft to comply with Homeland Security rules.

The Substations will be at the Ellenburg/Clinton town line. Due to the surrounding vegetation and distance from the roads, the stations will not be any more visible from current town, county and state roadways than the existing structures.

Substation

- Site Description: The substation is located along a branch of Access Road #7 in a wooded area.
- Grid Point: Northing 2,208,298.19; Easting 638,660.63

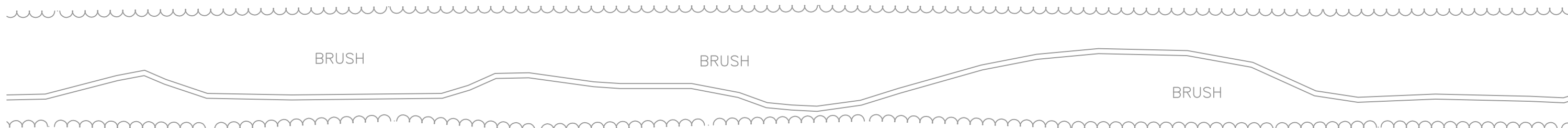
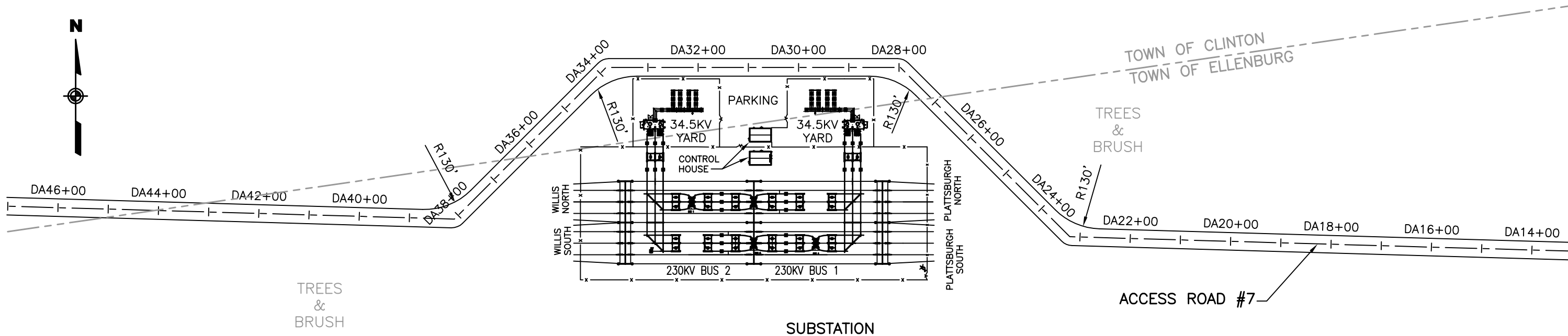
Access Road #7 Entrance

- Vegetation: The primary cover type is wooded.
- Grid Point: Northing 2,203,071.76; Easting 641,266.25
- Area Description: The entrance to Access Road #7 is located approximately 7,400 feet west of County Highway 5, on the north side of NYS Route 190. The access road will be constructed through wooded areas, and will follow the edges of agriculture/pasture areas and stone walls separating the agriculture/pasture fields as appropriate. The access road connects to WECSs 70-R, 89-R, 100-R and 109, and contains two branches connecting to WECS 67, 96-S, 97 and 98, as well as the proposed sub-station.

Access Road #7

- Access Road #7 is located approximately 7,400 feet west of County Highway 5, on the north side of NYS Route 190.
- The access road connects to WECSs 67, 70-R, 89-R, 96-S, 97, 98, 100-R and 109, as well as the proposed substation. It has a total length of approximately 13,900 feet including two branches off of the main access road.
- Access Road #7 runs north from NYS Route 190 for approximately 3,000 feet then turns east and runs east for approximately 450 feet. It then turns north and runs north for approximately 900 feet. It turns west and runs west for approximately 450 feet. It turns north for approximately 1,200 feet where it ends at WECS 70-R. WECS 109 is located approximately at station L25+00; WECS 100-R is located at station L46+00; WECS 89-R is located approximately at station L58+25; and WECS 70-R is located at station L70+38. A main branch runs west approximately 1,300 feet from station L70+38 on the main access road then wraps around the north side of the proposed sub-station. It continues west 2,700 feet then turns south. It runs south for 600 feet then turns west and runs west for approximately 700 feet ending at Patnode Road. The sub-station is located approximately at station DA31+00; and WECS 67 is located at station DA50+00. A sub-branch begins at station DA58+04 and runs generally south for approximately 2,560 feet where it ends at WECS 98. WECS 96-S is located at station Q17+00; WECS 97 is located approximately at station Q27+25 and WECS 98 is located at station Q35+62.

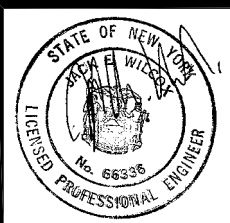
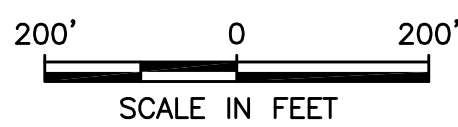
N:\11174329.00000\CAD\PERMIT LAYOUT\ SITE SUBSTATION REV2.DWG 1/5/06--1 ELB



TREES & BRUSH

TREES & BRUSH

NOTE:
EXACT SUBSTATION LOCATION TO BE DETERMINED DURING FINAL ENGINEERING DESIGN PROCESS.



CLIENT:
MARBLE RIVER, LLC
URS Corporation
77 Goodell Street Street, Buffalo, New York 14203
(716)856-5636 - (716)856-2545 fax

MARBLE RIVER WIND FARM	
ACCESS ROADWAY #7 PLAN FOR SUBSTATION	
DATE:	JANUARY 2006

WECS 96-S

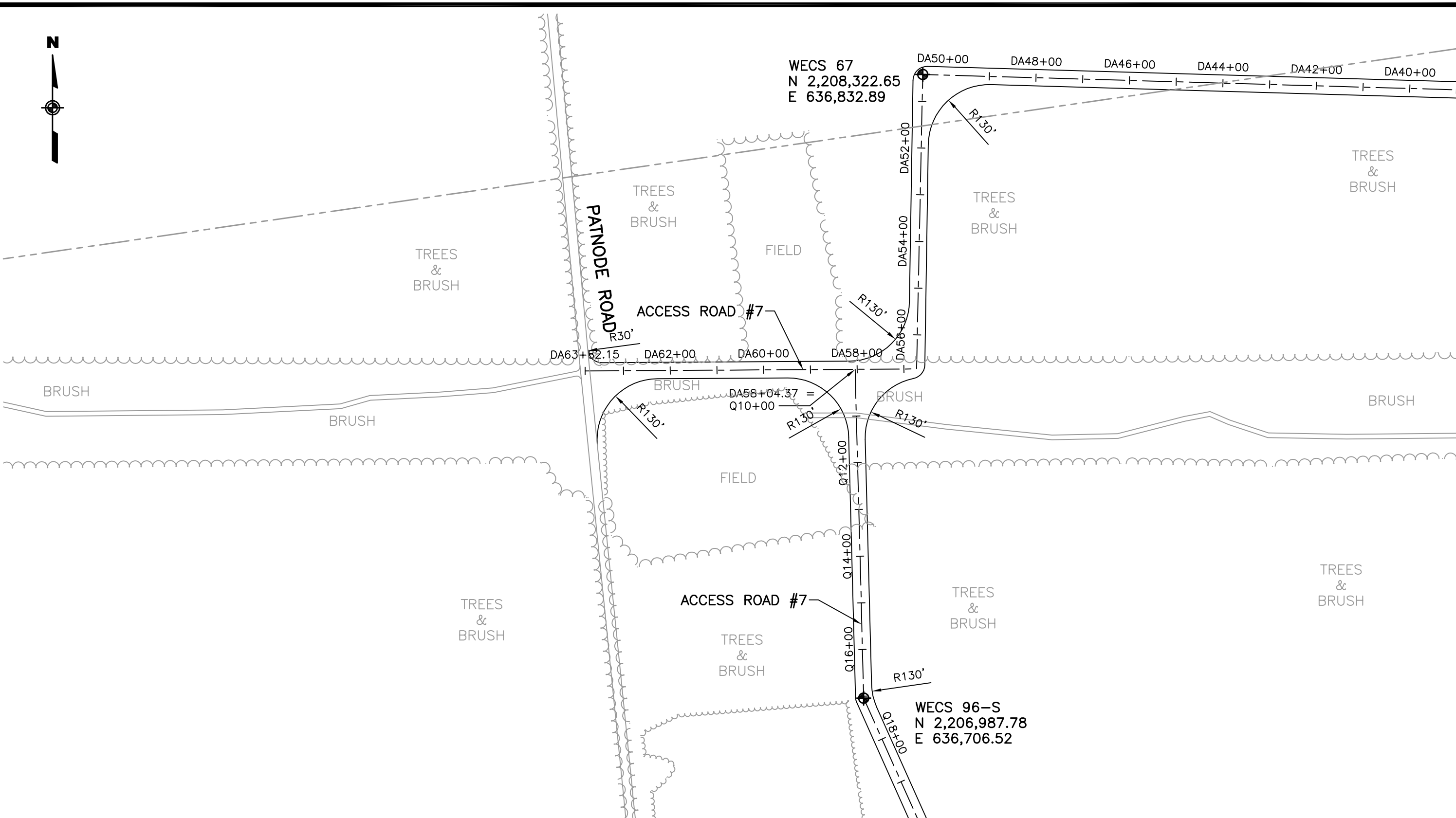
- Site Description: WECS 96-S is located along a branch of Access Road #7 in a wooded area.
- Grid Point: Northing 2,206,987.78; Easting 636,706.52

Access Road #7 Entrance

- Vegetation: The primary cover type is wooded.
- Grid Point: Northing 2,203,071.76; Easting 641,266.25
- Area Description: The entrance to Access Road #7 is located approximately 7,400 feet west of County Highway 5, on the north side of NYS Route 190. The access road will be constructed through wooded areas, and will follow the edges of agriculture/pasture areas and stone walls separating the agriculture/pasture fields as appropriate. The access road connects to WECSs 70-R, 89-R, 100-R and 109, and contains two branches connecting to WECS 67, 96-S, 97 and 98, as well as the proposed sub-station.

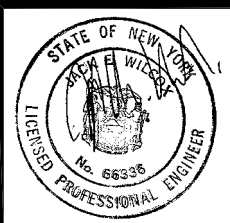
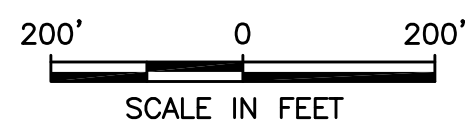
Access Road #7

- Access Road #7 is located approximately 7,400 feet west of County Highway 5, on the north side of NYS Route 190.
- The access road connects to WECSs 67, 70-R, 89-R, 96-S, 97, 98, 100-R and 109, as well as the proposed substation. It has a total length of approximately 13,900 feet including two branches off of the main access road.
- Access Road #7 runs north from NYS Route 190 for approximately 3,000 feet then turns east and runs east for approximately 450 feet. It then turns north and runs north for approximately 900 feet. It turns west and runs west for approximately 450 feet. It turns north for approximately 1,200 feet where it ends at WECS 70-R. WECS 109 is located approximately at station L25+00; WECS 100-R is located at station L46+00; WECS 89-R is located approximately at station L58+25; and WECS 70-R is located at station L70+38. A main branch runs west approximately 1,300 feet from station L70+38 on the main access road then wraps around the north side of the proposed sub-station. It continues west 2,700 feet then turns south. It runs south for 600 feet then turns west and runs west for approximately 700 feet ending at Patnode Road. The sub-station is located approximately at station DA31+00; and WECS 67 is located at station DA50+00. A sub-branch begins at station DA58+04 and runs generally south for approximately 2,560 feet where it ends at WECS 98. WECS 96-S is located at station Q17+00; WECS 97 is located approximately at station Q27+25 and WECS 98 is located at station Q35+62.



WECS 67
 N 2,208,322.65
 E 636,832.89

WECS 96-S
 N 2,206,987.78
 E 636,706.52



CLIENT:
MARBLE RIVER, LLC
URS Corporation
 77 Goodell Street, Buffalo, New York 14203
 (716)856-5636 - (716)856-2545 fax

MARBLE RIVER WIND FARM	
ACCESS ROADWAY #7 PLAN FOR WECSs 67 AND 96-S	
DATE: JANUARY 2006	

WECS 70-R

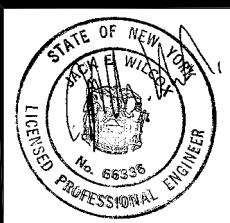
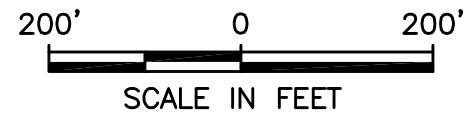
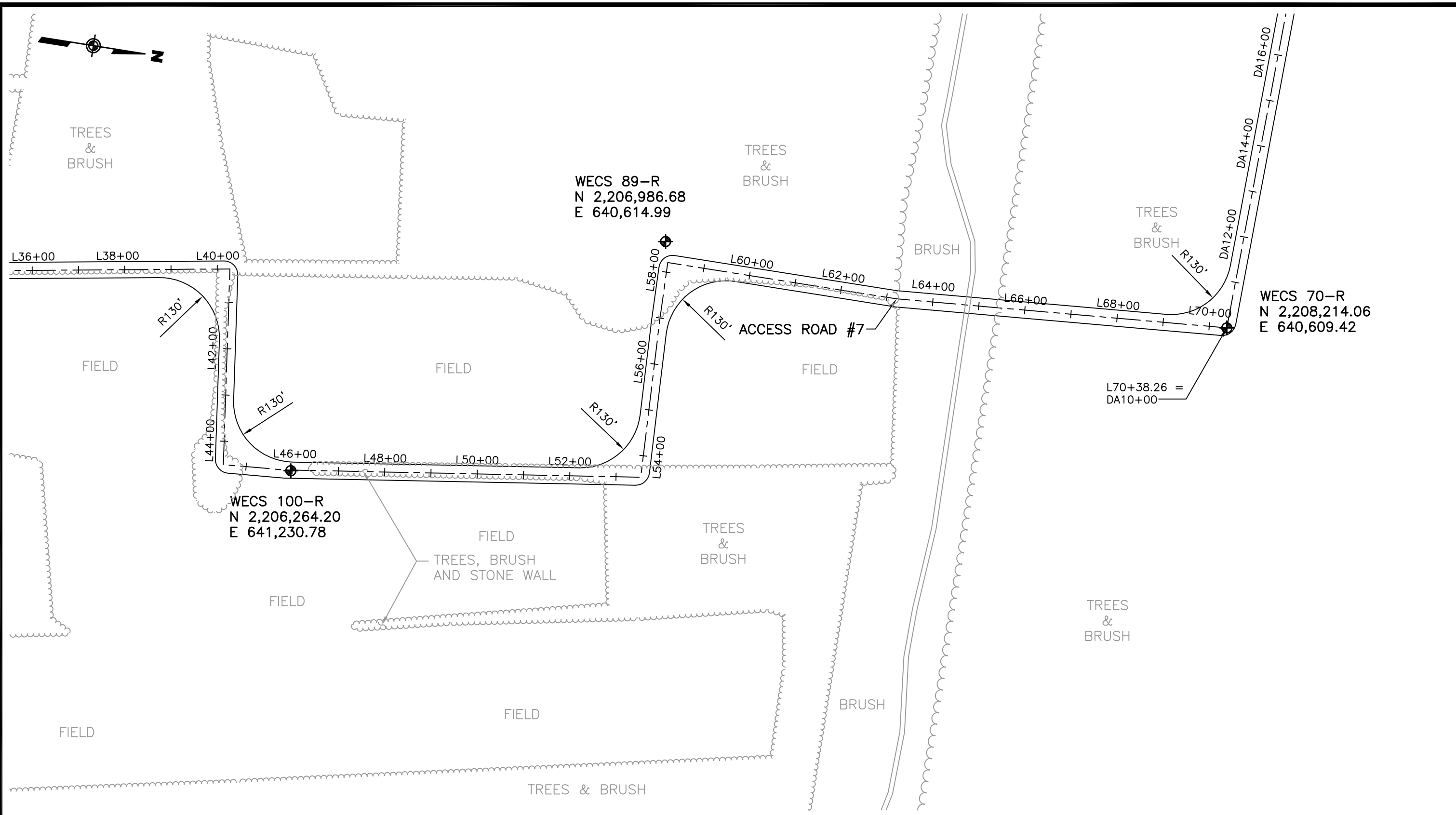
- Site Description: WECS 70-R is located at the end of Access Road #7 in a wooded area.
- Grid Point: Northing 2,208,214.06; Easting 640,609.42

Access Road #7 Entrance

- Vegetation: The primary cover type is wooded.
- Grid Point: Northing 2,203,071.76; Easting 641,266.25
- Area Description: The entrance to Access Road #7 is located approximately 7,400 feet west of County Highway 5, on the north side of NYS Route 190. The access road will be constructed through wooded areas, and will follow the edges of agriculture/pasture areas and stone walls separating the agriculture/pasture fields as appropriate. The access road connects to WECSs 70-R, 89-R, 100-R and 109, and contains two branches connecting to WECS 67, 96-S, 97 and 98, as well as the proposed sub-station.

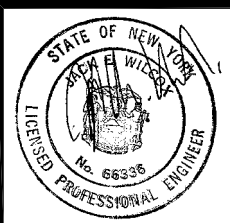
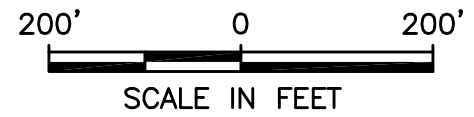
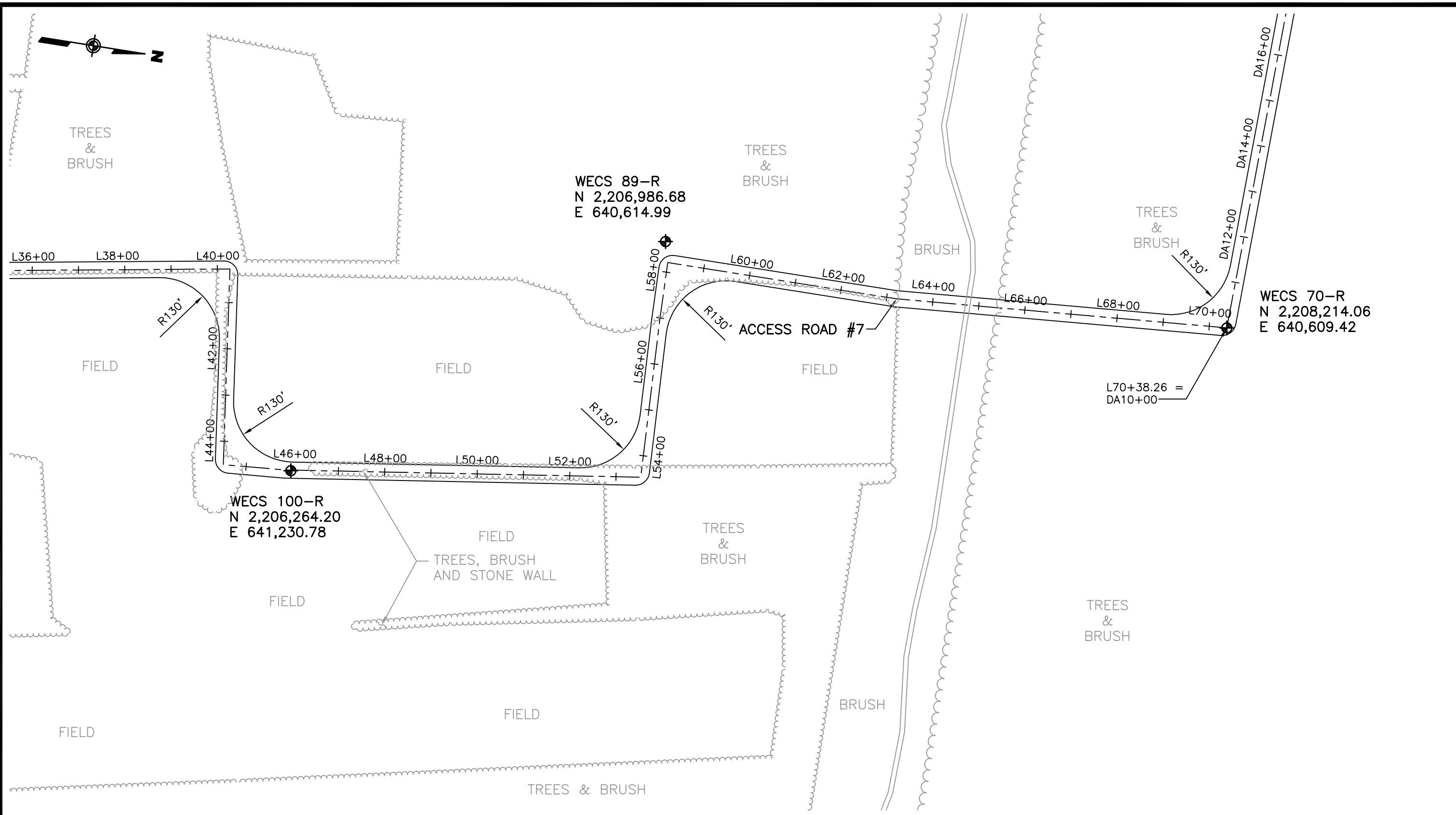
Access Road #7

- Access Road #7 is located approximately 7,400 feet west of County Highway 5, on the north side of NYS Route 190.
- The access road connects to WECSs 67, 70-R, 89-R, 96-S, 97, 98, 100-R and 109, as well as the proposed substation. It has a total length of approximately 13,900 feet including two branches off of the main access road.
- Access Road #7 runs north from NYS Route 190 for approximately 3,000 feet then turns east and runs east for approximately 450 feet. It then turns north and runs north for approximately 900 feet. It turns west and runs west for approximately 450 feet. It turns north for approximately 1,200 feet where it ends at WECS 70-R. WECS 109 is located approximately at station L25+00; WECS 100-R is located at station L46+00; WECS 89-R is located approximately at station L58+25; and WECS 70-R is located at station L70+38. A main branch runs west approximately 1,300 feet from station L70+38 on the main access road then wraps around the north side of the proposed sub-station. It continues west 2,700 feet then turns south. It runs south for 600 feet then turns west and runs west for approximately 700 feet ending at Patnode Road. The sub-station is located approximately at station DA31+00; and WECS 67 is located at station DA50+00. A sub-branch begins at station DA58+04 and runs generally south for approximately 2,560 feet where it ends at WECS 98. WECS 96-S is located at station Q17+00; WECS 97 is located approximately at station Q27+25 and WECS 98 is located at station Q35+62.



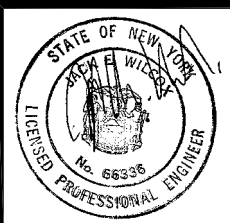
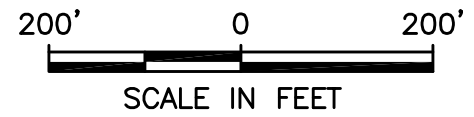
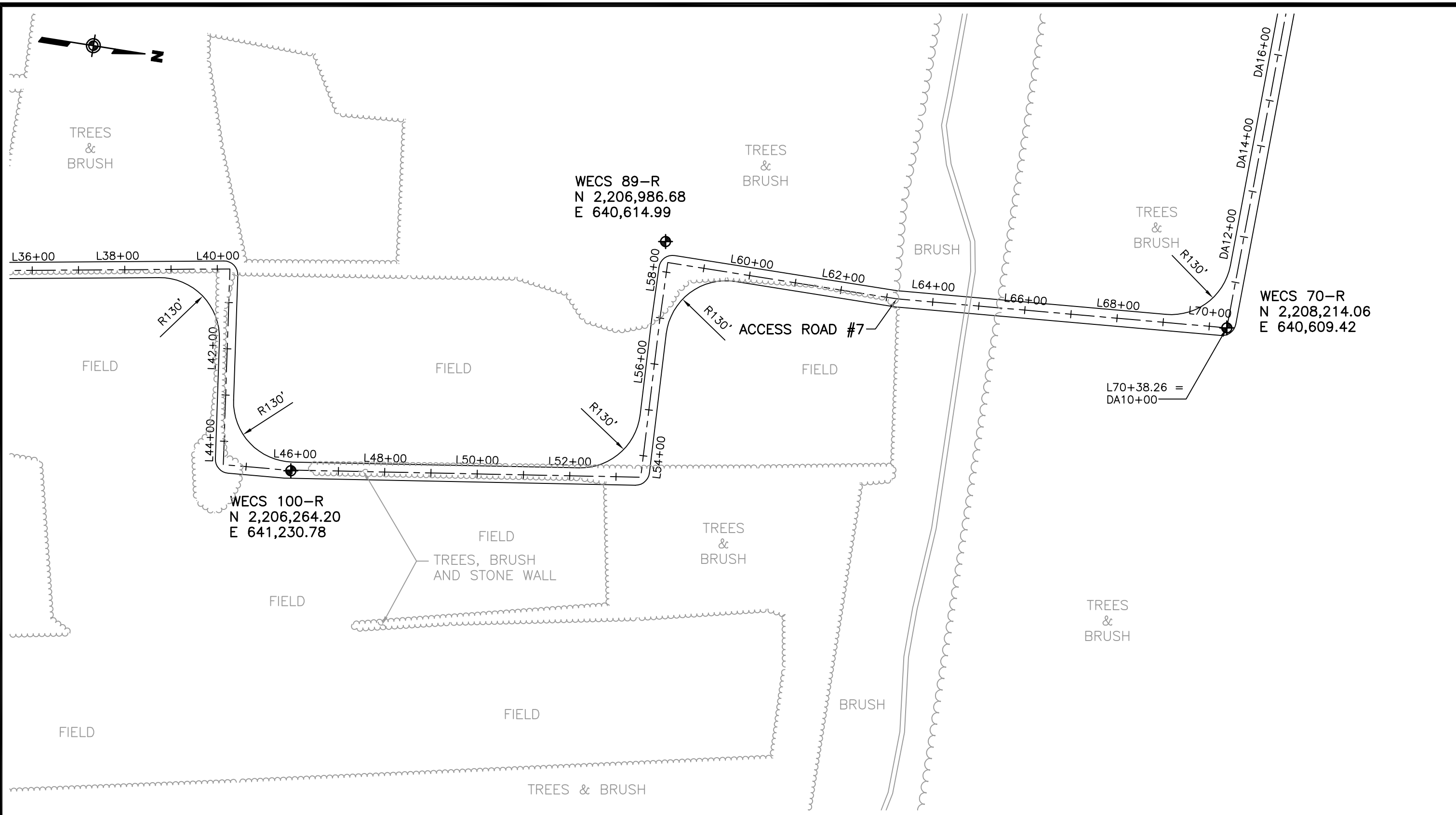
CLIENT:
MARBLE RIVER, LLC
URS Corporation
 77 Goodell Street Street, Buffalo, New York 14203
 (716)856-5636 - (716)856-2545 fax

MARBLE RIVER WIND FARM	
ACCESS ROADWAY #7 PLAN FOR WECSs 70-R, 89-R AND 100-R	
DATE: JANUARY 2006	



CLIENT:
MARBLE RIVER, LLC
URS Corporation
 77 Goodell Street Street, Buffalo, New York 14203
 (716)856-5636 - (716)856-2545 fax

MARBLE RIVER WIND FARM	
ACCESS ROADWAY #7 PLAN FOR WECSs 70-R, 89-R AND 100-R	
DATE: JANUARY 2006	



CLIENT:
MARBLE RIVER, LLC
URS Corporation
 77 Goodell Street Street, Buffalo, New York 14203
 (716)856-5636 - (716)856-2545 fax

MARBLE RIVER WIND FARM	
ACCESS ROADWAY #7 PLAN FOR WECSs 70-R, 89-R AND 100-R	
DATE: JANUARY 2006	